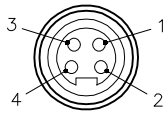


FEMALE END VIEW

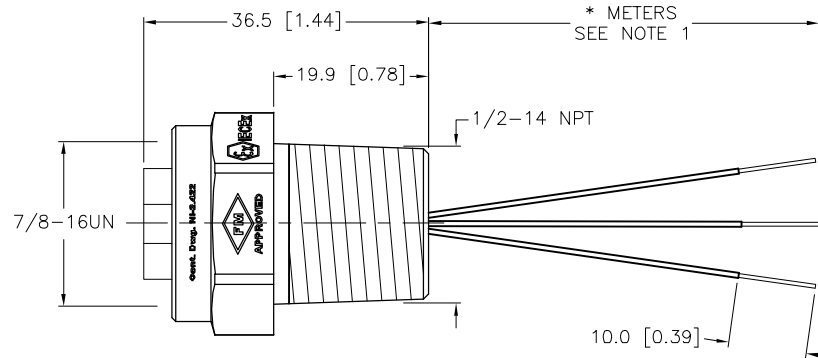
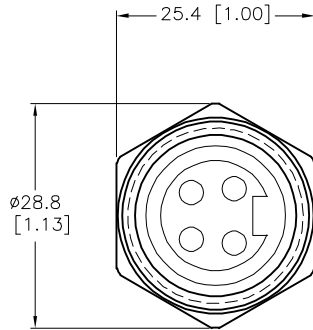


- 1 = BLUE
2 = BROWN
3 = N/C
4 = GREEN/YELLOW



SPECIFICATIONS

CONTACT CARRIER MATERIAL	TPV
CONTACT MATERIAL/PLATING	BRASS/GOLD
HOUSING MATERIAL/FINISH	STAINLESS STEEL/PASSIVATED
RATED CURRENT [A] (@70°C)	8.0 A
RATED VOLTAGE [V]	250 V
PROTECTION CLASS	NEMA 1,3,4,4X,6P,12 & IECIP67,IP68,IP69,IP69K
CONDUCTOR INSULATION MATERIAL	PVC
CONDUCTORS	3x18 AWG
CONDUCTOR TEMPERATURE RATING	-40°C to +105°C (-40°F to +221°F)
APPROVAL MARKING ON DEVICE	<div><div>FM APPROVED</div><div>IECEx FMG 16.0032X 3 G Ex nA IIC T5 Gc; 3 G Ex eb IIC T5 Gb; Cl I, Zn 2, AEx nA IIC T5 Gc; Cl I, Zn 2, AEx ec IIC T5 Gc; Cl, Zn 1, AEx eb IIC T5 Gb, Cl Div 2, Grp A, B, C, D T5 FM15ATEX0066X</div><div>II 3 G Ex nA IIC T5 Gc; II 3 G Ex ec IIC T5 Gc; FM15ATEX0018X II 2 G Ex eb IIC T5 Gb -40°C ≤ T_a ≤ 70°C (≤ 90°C with I ≤ 600mA)</div></div>



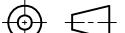
CABLE LENGTH	TOLERANCE *
ALL LENGTHS	+ 4% (OR 50mm) OF LENGTH - 0% (OR 0mm) OF LENGTH WHICHEVER IS GREATER
STRIP LENGTH	TOLERANCE *
0-7mm	±0.5mm
8-29mm	±1.0mm
30-49mm	±2.0mm
50-69mm	±3.0mm
70-100mm	±4.0mm
OVER 100mm	±5.0mm

* UNLESS OTHERWISE SPECIFIED

NOTES:

1. "*" INDICATES LEAD LENGTH IN METERS. CONTACT TURCK TO ORDER SPECIFIC LENGTHS.

SOURCE DRAWING - FOR REFERENCE ONLY

RELATED DOCUMENTS 1. 2. 3. 4.	3RD ANGLE PROJECTION 	THIS DRAWING IS CONFIDENTIAL AND THE PROPERTY OF TURCK INC. USE OF THIS DOCUMENT WITHOUT WRITTEN PERMISSION IS PROHIBITED.		<div>TURCK</div> <div>3000 CAMPUS DRIVE MINNEAPOLIS, MN 55441 1-800-544-7769 (763) 553-7300 (763) 553-0708 fax www.turck.us</div>		
MATERIAL SEE SPECIFICATIONS	ALL DIMENSIONS DISPLAYED ON THIS DRAWING ARE FOR REFERENCE ONLY CONTACT TURCK FOR MORE INFORMATION	DRFT TV	DATE 11/05/15	DESCRIPTION P-X-RKFV 40-* / 14.5 / NPT		
APVD J.B.		SCALE 1=1.0				
FINISH SEE SPECIFICATIONS		UNIT OF MEASUREMENT MILLIMETER [INCH]		IDENTIFICATION NO.		REV H
		DO NOT SCALE THIS DRAWING		FILE: 777036310		SHEET 1 OF 1